

Centennial Place Newsletter

705-932-4464

<https://www.centennialplace.com> **AON** Inc. Where community develops.



A Note from Life Enrichment

Hello May! We celebrate warmer days, spring flowers and of course all the moms this month! Please see the poster on page 2 for the details on the Mother's Day High Tea. Families are welcome to join us. Please RSVP by May 6th! We will also be having a fiesta on May 5th for Cinco De Mayo. This social will be a lot of fun complete with a pinata! Join us at 2:15pm in the Fireside Lounge for this event! Other socials this month include a Victoria Day Social on Monday May 18th at 2:30pm and a Karaoke and Pub Social on Friday May 22nd at 2:15pm! We are also excited to welcome back the Alzheimer Society on May 20th at 3:00pm to walk around the block to kick off the Walk to End Alzheimer's. The community walk will take place Saturday May 30th at Beavermead Park from 10am to 12pm. For more information, please check out the poster board in the Fireside Lounge currently on display! Residents' Council this month takes place on the last Monday of the calendar, May 25th at 1:30pm in the Trail Dining Room. All residents are welcome! For a full list of activities this month please reference the home area calendars. For any programming related questions or to sign up for special events please reach out to Nicole or Michelle in the LE Office! Happy Mother's Day to all the moms and mother figures! Have a wonderful month!



May Outing

please sign up with the LE Dept.

May 29th 2026

11:30am

Walking to Subway for
Lunch

May Entertainment

May 1st - Whoo Hoo Myles at
2:30pm

May 11th - Millbrook
Community Choir at 6:30pm

May 15th - The Dynamics at
2:30pm

May 27th - Keith Kirkpatrick at
2:30pm





JOIN US IN THE FIRESIDE LOUNGE FOR

MOTHER'S
DAY
High Tea

SUNDAY | MAY 10 | 2:30 PM

FEATURING MUSIC BY DARLENE

FAMILIES, PLEASE RSVP BY **MAY 6TH**
TO THE LIFE ENRICHMENT DEPARTMENT TO
SECURE A SPOT!

Director of Dietary Services

I want to extend a warm welcome to the new residents that have joined us this month. I hope you are settling in and enjoying the delicious homemade meals and snacks.

Happy Mothers' Day to all the mothers who live at Centennial Place!

I want to extend an invitation to join me at our next food meeting being held on May 25th at 1:30pm in the Trail Dining Room. The new Spring/Summer menu started April 6th. I hope everyone is enjoying the new menu items and snacks!

Tracey Russell, CSNM
Director of Dietary Services

Coming Soon!

Keep your eyes on your email inbox in the upcoming weeks for the
Resident & Family Survey!



PASTA PARTY!



Happy Birthday

Roy Robertson- 02
Anna Burchat- 05
Anna Santomero- 07
Tom Oke- 09
Ken Anderson- 10
John Friedmann- 19
Eric Hudson- 24

If your loved one has not signed our media consent forms, you will not find them in photos or lists in our newsletter.

Welcome



Eric Hudson



Vernon Harris



John Adamson



Melitta Kiefert

Environmental Services Supervisor

You may have noticed two safety items in your room when you moved in.

First there is a red electrical outlet in all resident rooms. This outlet is connected to our emergency generator. In the event of a power outage this outlet will be active for you to use. As well all major building systems such as heating, nurse call, phone service, and hallway lighting are on the emergency generator. We test the generator each month on the 1st. Wednesday of each month to ensure it will operate properly. This test lasts for approximately 1 hour.

Second, on your door is a grey "tag". The purpose of this tag is to assist staff during an emergency situation. The tag has a magnet in the fabric. When it is lifted and placed on the door frame, a "VACANT" sign is revealed. For example, this would be used in a fire drill situation when staff are checking rooms. If a room was empty, they would use the tag to indicate the room was vacant and did not need to be checked again.

These items are part of the Emergency manual developed for AON's Long Term Care properties. All staff receive training on this plan and we practice some of these procedures during our monthly fire drills. Although we hope never to have an emergency, the procedures and equipment are in place so we are prepared and can address the situation quickly and minimize its impact to residents and the building.

Kevin Kellow

Environmental Services Supervisor



Carrot Cake Cream Cheese Bars

12 Servings

INGREDIENTS:

- 1 cup flour
- ½ cup sugar
- 1 tsp cinnamon
- ½ tsp baking soda
- ¼ cup vegetable oil
- 2 large eggs
- 1 cup finely grated carrots

Cream cheese swirl:

- 4 oz cream cheese, room temperature
- ¼ cup sugar
- 1 egg yolk

DIRECTIONS:

- 1) Preheat oven to 305 degrees F. Line an 8x8 inch pan
- 2) Mix flour, sugar, cinnamon, baking soda and salt.
- 3) Stir in oil, eggs, and carrots until smooth.
- 4) Beat cream cheese, sugar and egg yolk in a small bowl.
- 5) Spread batter in a pan and smooth cream cheese mixture on top. Swirl gently.
- 6) Bake for 30-35minutes. Cool completely before cutting.



IG WEALTH MANAGEMENT WALK FOR ALZHEIMER'S

Date: May 30th, 2026

Time: 10am - 12pm

Event Location: Beavermead Park

2011 Ashburnham Dr, Peterborough

Contact: Ryan Arnold and Dani Serblowski

Phone: (705) 748-5131

Email: ryan@alzheimerjourney.ca or
dserblowski@alzheimerjourney.ca

Office Manager

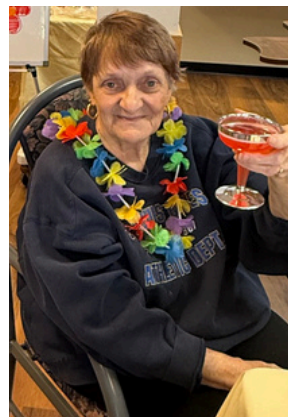
Attention All Rate Reduction Residents and Family Members!

It's Time to Renew your Rate Reduction Application!
As the deadline to file your income tax return for 2025 was April 30, 2026, Canada Revenue Agency will be mailing out 2025 Notice of Assessment.
Please deliver to Centennial Place or email me - cpom@aoninc.com as soon as possible so that your rate reduction application can be processed for the next renewal period from July 1, 2025 to June 30, 2026.
We require this documentation to complete the rate reduction application which must be submitted to the Ministry of Health & Long Term Care every year so that they can continue receiving their rate reduction. Their current rate reduction is only effective until June 30, 2026.

Thank you,
Mallory Adams
Office Manager



We have been having fun watching the chicken eggs hatch! The first chick arrived April 26th! Take a peek at the chicks before they leave May 8th!



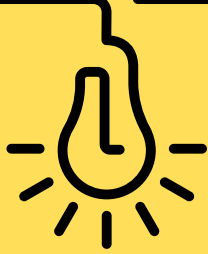
WOW! CORNER

Welcome to the WOW Corner.
Each month we will highlight the employee who exemplifies customer service here at Centennial Place.



CONGRATS TO MATT HICKEY WHO WAS OUR WOW WINNER FOR APRIL!

Have you seen an act of extraordinary customer service?
If so please fill out a WOW Form outside the elevators!




Did You Know!?

Prompt RSVPing to special events helps the LE team to plan accordingly! We love seeing family and friends join us for events, the more the merrier! Please continue to respect the deadlines to RSVP!

Residents and staff would like to extend their condolences to the families and friends of:

George 'Harry' Greer



Leadership Directory



Courtney Jilesen- Administrator
Ext 305



Victoria Woudsma- Director of Care
Ext 301



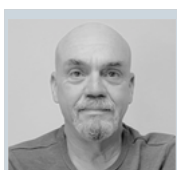
Leslie Goble- Associate Director of Care
Ext 302



Brittany Thorn-Director of Resident &
Family Services
Ext 312



Tracey Russell- Directory of Dietary
Services
Ext 304



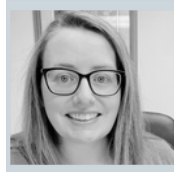
Kevin Kellow- Environmental Services
Supervisor
Ext 316



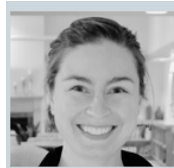
Mallory Adams- Office Manager
Ext 313



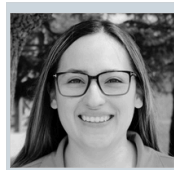
Karley Schaap- RAI Coordinator
Ext 310



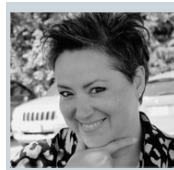
Lisa van Bruinessen- Behavioural
Supports Coordinator
Ext 303



Nicole Vrooman- Life Enrichment
Coordinator
Ext 311



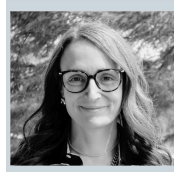
Michelle Erazo- Life Enrichment
Coordinator
Ext 318



Corinne Buntsma- IPAC Lead
Ext 323



Jami McLeod- PSW Supervisor
Ext 306



Alexandra Rawek- Social Service
Worker
Ext 307



Molly Westland- Clinical Support
Nurse



Nancy Kimball- Clinical
Assessment Coordinator

Online Resources

Alzheimer Society
www.alzheimer.ca

Canadian Diabetes Association
www.diabetes.ca

Heart and Stroke Foundation
www.heartandstroke.ca

The Arthritis Society
www.arthritis.ca



To view Centennial Place Happenings you can access
AON TV by visiting the link below:
<https://www.centennialplace.com/aon-tv/>